

# Luxaflex® Venetian blinds and skylight Venetian blinds with a remote control unit



www.luxaflex.com

This Venetian blind is supplied with:

- 1 remote control handset with batteries
- 1 battery pack with batteries

## ASSEMBLY

The Luxaflex® Venetian blind with a remote control unit is assembled according to the standard supplied assembly/operating instructions.

### Fig. 1 Connecting the battery pack and the motor

The horizontal blind is supplied with electronics which are installed behind the black window in the headrail of the blind and in the skylight Venetian blind behind the opening in the headrail. The electronics contain various connections and 3 jumpers. Products are provided with standard factory settings. Apart from special options, the products are ready to use.

A: Motor

B: Jumpers

A jumper is a black plug which always connects two pins with each other.

1 = Internal/external infrared eye

2 = Tilt direction of slats

3 = Remote control channel

C: Connections

4 = Infrared eye connection

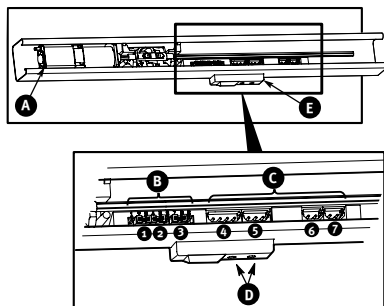
5 = Not applicable

6 = Battery pack/adaptor connection

7 = Motor connection

D: Manual operation

E: Internal infrared eye



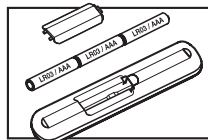
### Fig. 2 Fitting and replacement of batteries in the remote control handset

The remote control uses three LR03, AAA batteries.

Remove the lid of the remote control.

Remove the old batteries and replace with new batteries.

Take note of the ( "+" and "-" end) direction of the batteries.



### Fig. 3 Fitting and replacement of the batteries in the battery pack (standard Venetian blind)

The receiver uses four LR 6, AA batteries.

Remove the old batteries from the battery pack and fit new batteries.

Take note of the ( "+" and "-" end) direction of the batteries.

### Fig. 3 Fitting and replacement of the batteries in the battery pack (for skylights)

The receiver uses four LR 6, AA batteries.

Lower the Venetian blind completely and carefully push the slats aside.

Remove the old batteries from the holder and fit new batteries.

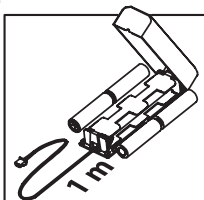
Take note of the ( "+" and "-" end) direction of the batteries.

#### Take Note!

After fitting the batteries in the battery pack, it takes approximately 30 seconds before you can operate the Venetian blind.

### Fig. 3 Positioning the battery pack

The battery pack can be attached according to your own preference using double sided adhesive tape. The length of the connector cable is 1 metre. With skylights, the battery pack is normally placed on the upper cassette.

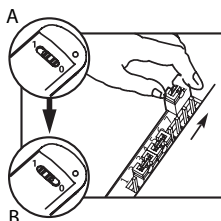


### Fig. 4 Adjustment of channel selection

It will only be necessary to re-adjust the blind if you want to operate several blinds with 1 remote control unit. With several Venetian blinds placed next to each other, it may be preferable to adjust the nearby Venetian blinds to a different channel on the remote control handset. The Venetian blinds can then simply be operated separately.

#### Fig. 4A

The standard position of the remote control adjustment is channel 0. Put the remote control button to the right. Jumper 3 is on position 7/8.



#### Fig. 4B

You can change the channel on the remote control to channel 1. Put the button on the remote control to the left. Jumper 3 must be on position 8/9.

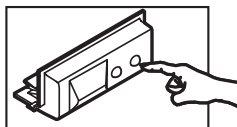
#### Take Note!

If you want to operate 2 Venetian blinds with 1 remote control, you must remember that both Venetian blinds will not be tilted 100% simultaneously.

## OPERATION

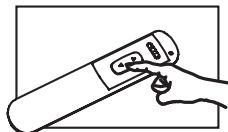
### Fig. 5 Manual operation

Push one of the two buttons on the Venetian blind to allow the slats to be tilted manually.



### Fig. 6 Remote control

Point the remote control in the direction of the receiver at an angle of not more than 45 degrees. Push on the button of the remote control to allow the slats to be tilted. The transmitter has a maximum range of 8 metres.



## OPTIONS

### Fig. 1 External infrared eye (to be ordered optionally)

The Venetian blind can be operated via an external infrared eye. This external infrared eye can be placed at a maximum distance of 50 cm from the Venetian blind.

What should you do? (see E)

- Connect the external infrared eye to connection 4
- Place the external infrared eye in the desired position
- Move jumper 1 from position 2/3 (internal infrared eye) to position 1/2 (external infrared eye)

### Fig. 1 230V Adaptor (to be ordered optionally)

- Instead of a battery pack, you can connect an adaptor.
- What should you do? (see C)
- Disconnect connection 6 of the battery pack
- Connect the adaptor to connection 6
- Push the plug in the socket

## PROCEDURE WITH MALFUNCTIONS

**Problem:** Venetian blind with remote control does not function

<b>Cause</b>	<b>Solution</b>
Infrared eye (internal or external) is not in range.	Make sure the infrared eye is not obstructed, by curtains for instance.
Batteries in the remote control or in the battery pack are not installed correctly or need replacing.	Install the batteries correctly, according to instructions.
The venetian blind needs 0,5 seconds to react to the remote control.	Keep the button of the remote control down for at least 0,5 seconds.
The channel switch on the remote control is in the incorrect position.	Move the button on the remote control.

### Extra information for the installer

<b>Problem</b>	<b>Solution</b>
The position of the jumper does not correspond with the use of the internal or external infrared eye.	When using the external infrared eye, place the jumper in position 1/2 (see fig. 1). When using the internal infrared eye, place the jumper opposite 2/3 (see fig. 1).
In the case of several Venetian blinds next to each other, the slats have a different tilting direction.	With a motor assembled to the right in the headrail, the jumper normally stands in position 4/5. When a motor is positioned on the left in the headrail, move the jumper to position 5/6 (see fig. 1).
The connection of the motor cable and the battery pack on the electronics are swapped.	Connect the cables correctly. The motor cable in position D and the battery pack cable in position C (see fig. 1).