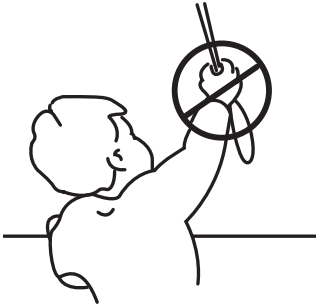


Sunway® Roller Blinds

g
guarantee
i
installation
& operation
o
instructions

SUNWAY®

⚠ WARNING



- Young children can STRANGLE in the loop of pull cords, chains and tapes and cords that operate window coverings. They can also wrap cords around their necks.
- To avoid strangulation and entanglement, keep cords out of the reach of young children.
- Move beds, cots and furniture away from window covering cords.

Persons in charge of young children are ultimately responsible for following the safety instructions provided.



The British Blind and Shutter Association's national campaign to promote window blind cord safety. For more info see: www.makeitsafe.org.uk

SUNWAY®

Guarantee, Installation and Operating Instructions Sunway® Roller Blinds

Dear Customer,

We thank you for choosing Sunway® products. In the unlikely event that the Sunway® product guarantee service is needed, please contact the dealer from whom the product was purchased. Alternatively you may contact a member of our authorised Sunway® service network. In order to minimise any unnecessary inconvenience, we suggest that the product installation instructions are read carefully before contacting the dealer on our service network.

YOUR 12 MONTH GUARANTEE

Sunway® guarantees that all Sunway® window covering products are free from material and assembly defects, provided that such products were properly installed in a domestic situation. For non-domestic installations, refer to the Sunway® general sales conditions. The obligation of Sunway® is limited to repair or replacement of the defective materials or components. Repairs will be made with like or similar parts. The guarantee is limited to the original purchaser.

Scope of warranty	
Removal of product from end user's window	X
Carriage (to - from factory)	✓
Labour (assembly / repair)	✓
Re-installation of product at end users window	X
Components (with like or similar parts)	✓
Cords	✓
Fabric (with like or similar fabric)	✓
Consequential loss	X

To obtain the guarantee service, please contact the dealer from whom you purchased the product. The dealer will request Sunway® to promptly repair or replace any defective parts or components. Guarantee claims must be accompanied by proof of purchase as well as details regarding the nature of the problem.

CONDITIONS

This guarantee is invalid if the damage or failure was caused by:

- Accident • Alteration • Exposure to elements • Misuse/Abuse • Motorised devices
- Failure to follow measurement, installation, cleaning and maintenance instructions
- Blinds are **not** fitted in a domestic situation

The guarantee is exclusive and in lieu of all other obligations, liabilities or warranties. In no event shall Sunway® be liable or responsible for incidental or consequential damages or for any other direct or indirect damage, loss, cost, expense or fee.

The guarantee does not affect the consumers statutory rights under applicable national laws in force, nor the consumers rights against the dealer arising from their sales/purchase contract.

Fitting Instructions Ball chain Roller System



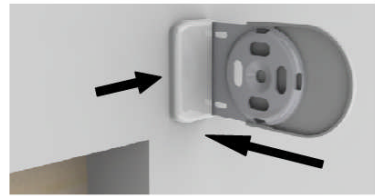
1a. When Face Fitting, take brackets to the wall and position in the required location. Use the bracket to mark the 2 hole positions, or drill straight through slots on the bracket. Fill the holes with wall plugs if the substrate requires it.



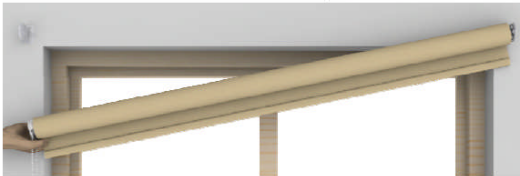
1b. Using a screwdriver or power driver, insert screws into holes or wall plugs, and tighten. The bracket can be slid along the length of the slots to reach its final position before screws are completely tightened,



1c. If Top Fixing, the process is the same as steps 1a. and 1b. Again, ensure a wall plug is used when necessary. Once the brackets are fitted, the bracket base cover and side covers can be fitted if specified.



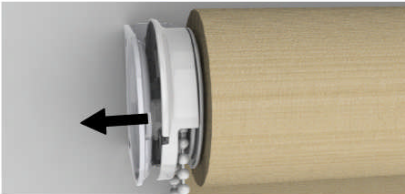
1d. The base cover has a tab that should fit underneath the metal bracket, and the side cover slides over the bracket, and should be pushed on until flush with the wall.



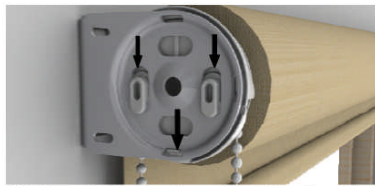
2a. The blind is now ready to be fitted. Ensure the blind is fully rolled up, and any child safety devices are fitted to the chain in the proper procedure and position at this stage. The pin end should be inserted in to the bracket first. Angle the blind with the control end in hand and point the pin end into the bracket.



2b. The pin end should locate itself into the central hole of the bracket thanks to its 'dish' shape. Ensure the pin end stays in this central hole by keeping the spring compressed and pin end firmly against the bracket.



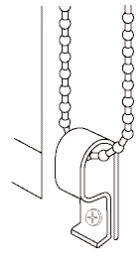
2c. While the spring is compressed, take the Control end up to the opposite bracket. The spring compression will allow the friction unit to be positioned inside the bracket. Locate the lugs on the friction unit through the holes in the bracket.



2d. Once the lugs are through the slots, the unit should be pulled down into place so that the lugs overlap the bracket and can not come out. The safety lock at the bottom of the unit should click into the bracket, preventing the unit from lifting up and out of the bracket.

3. FITTING THE CHILD SAFETY CLIP

The child safety clip is designed to tension the operating chain so that it restricts access by young children to the loop and avoid the risk of strangulation.

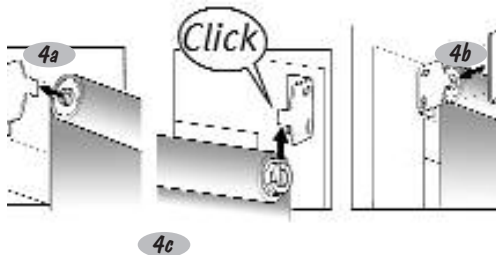


Fitting:

- 3a. Place the chain into the clip
- 3b. Pull the clip downward to take any slack out of the chain. At this point check that the blind operates easily and is not being over tensioned.
- 3c. Mark the fixing position of the clip
- 3d. Ensure clip is fixed securely using the fixings provided.

4. "SOFT-RAISE" SPRING OPERATION

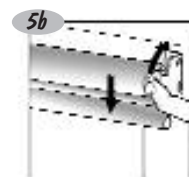
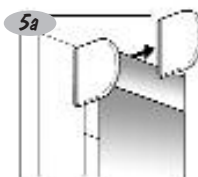
- 4a. Insert the cross-shaped opening of the spring, on the LH side of the blind in the bracket. If you have ordered your blind to be "reverse rolled" (cloth rolling to room side), the cross shaped opening should be mounted to the RH bracket. (The positioning of the cross onto the brackets is not important).
- 4b. Bring the bearing end of the blind to the lip of the bracket. Align the slot on the bearing with edge of the bracket. Gently push the bearing into the bracket until a 'click' is heard. This can be done either from the top or under side.



5. DEMOUNTING

- 5a. Remove the plastic covers from the brackets.
- 5b. Push with your thumb against the lever on the bearing until the slot opens.

You can also use a screwdriver. You should then however take care to hold the blind in place, while pressing, in order to avoid dropping the blind after it's release from the brackets.



“SOFT-RAISE” SPRING OPERATION

When installing a Sunway® roller blind with “Soft-raise” spring, it is sometimes useful to adjust the tension of the spring.

This is done as follows:

Always first install the roller blind, as described above.

To increase the tension:

Pull the blind down and lock it into position.

Demount the blind from the brackets and roll it up again by hand.

NB: every turn helps to increase the tension on the spring.

Re-insert the blind into the brackets and test the tension again by pulling the blind down and letting it roll up.

To decrease the tension:

Let the blind roll up completely, but make sure it is locked in position. Demount the blind from the brackets and roll the fabric off by hand. With every turn the tension on the spring will decrease. Re-install the roller blind into the brackets and test the tension by operating the blind.

CARE INSTRUCTIONS

Blind should be dusted down as required with a dry or damp cloth

SUNWAY®

www.sunwayblinds.co.uk

HunterDouglas Ltd. Window Fashion Division
Mersey Ind. Est., Heaton Mersey, Stockport, Cheshire SK4 3EQ.
Tel: 0161-442 9500 Fax: 0161-432 3200.